

MONTHLY MEMBERSHIP PROGRESS REPORT

District A 1

Results as of: 3/31/2020

GMT:

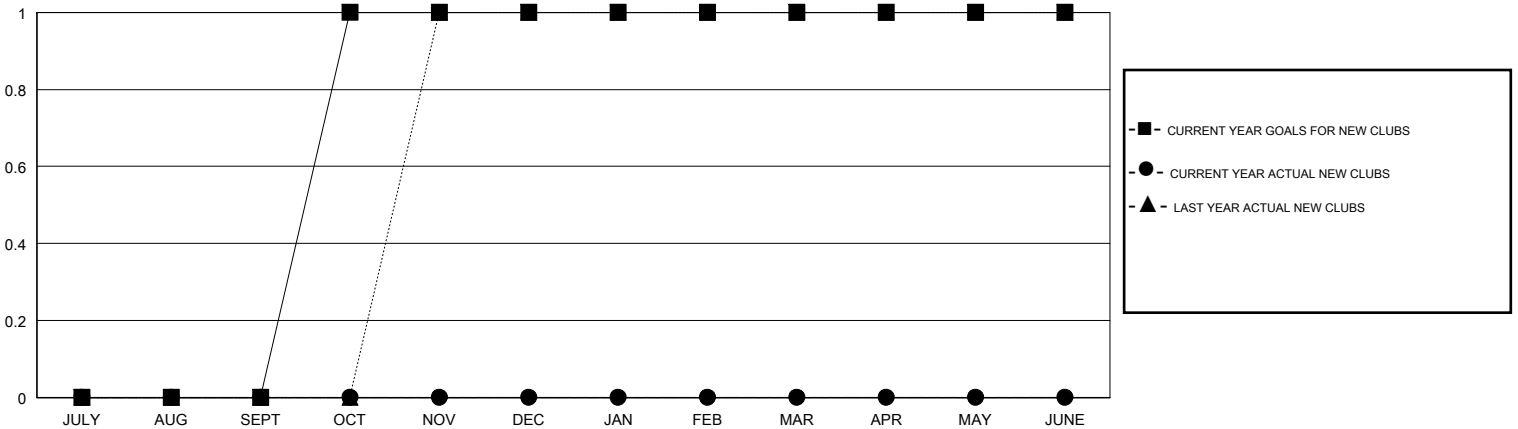
LOCATION ONTARIO

GMT CA

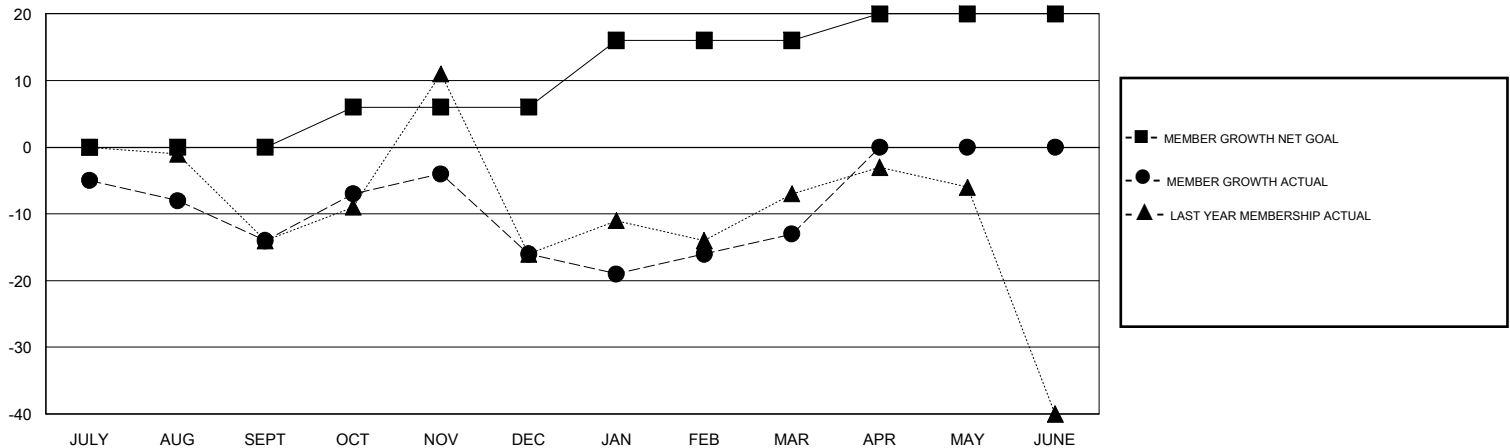
| Clubs | | | |
|-----------------------|---------------|-----------|---------------|
| RESULTS FOR 2019-2020 | | | |
| QUARTER | NEW CLUB GOAL | NEW CLUBS | DROPPED CLUBS |
| JULY/AUG/SEPT | 0 | 0 | 0 |
| OCT/NOV/DEC | 1 | 0 | 0 |
| JAN/FEB/MAR | 0 | 0 | 0 |
| APR/MAY/JUNE | 0 | 0 | 0 |

| Members | | | |
|-----------------------|------------------------|----------------------|--|
| RESULTS FOR 2019-2020 | | | |
| QUARTER | MEMBER GROWTH NET GOAL | MEMBER GROWTH ACTUAL | DROPPED MEMBERS ACTUAL (including transfers) |
| JULY/AUG/SEPT | 0 | 16 | 22 |
| OCT/NOV/DEC | 6 | 29 | 29 |
| JAN/FEB/MAR | 10 | 20 | 13 |
| APR/MAY/JUNE | 4 | 0 | 0 |

GOALS AND ACTUAL NEW CLUBS CUMULATIVE



GOALS AND ACTUAL MEMBERS CUMULATIVE



| | | |
|------------------------|---|------------------------------------|
| DROPPED CLUBS: 0 | 23 CLUBS OF 40 ADDED 1 OR MORE NEW MEMBERS | <u>GENDER DISTRIBUTION</u> |
| | | MALE 912 (77.55%) |
| | | FEMALE 264 (22.45%) |
| <u>DROPPED MEMBERS</u> | CLICK HERE FOR CUMULATIVE MEMBERSHIP DATA | TOTAL FAMILY UNIT MEMBERS 191 |
| DECEASED 11 | | FAMILY MEMBERS PAYING HALF DUES 96 |
| CLUB CANCELLED 0 | | |
| OTHER 53 | | |
| TOTAL 64 | | |